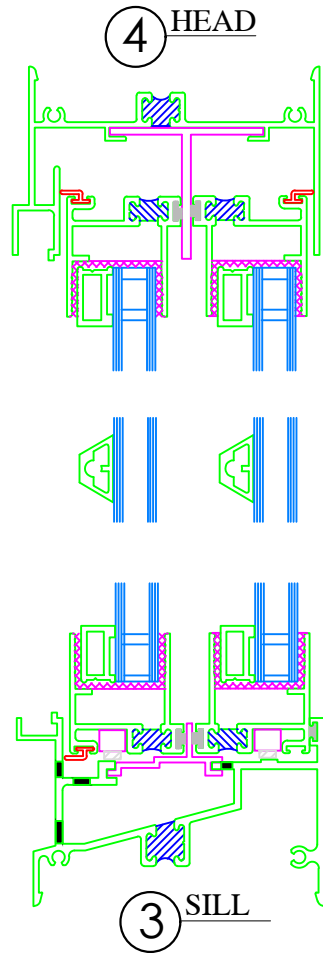
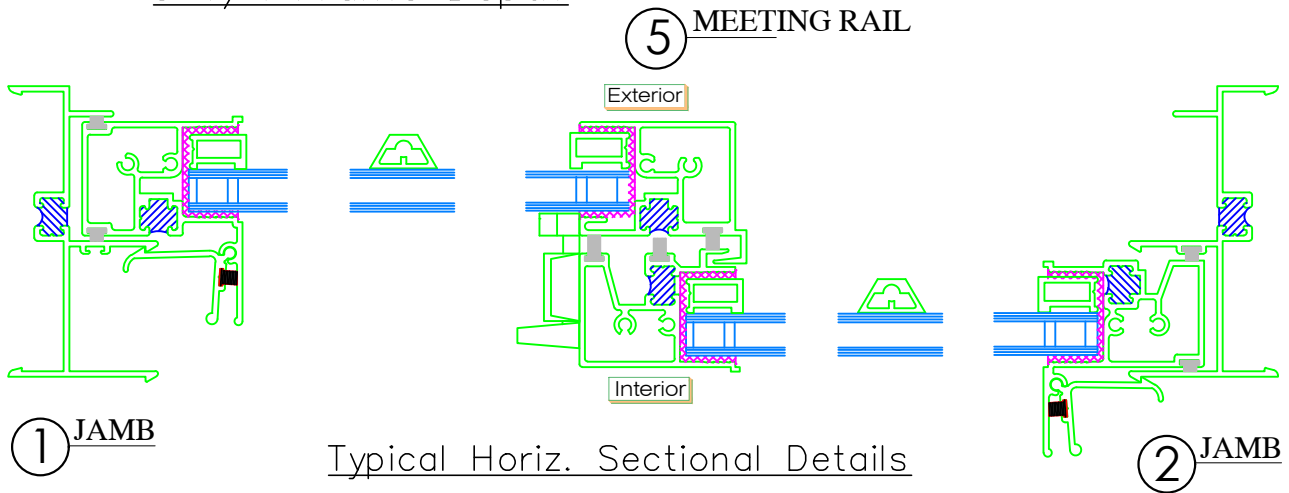


Series 6000C Horizontal Slider
 Aluminum Prime Window
 Thermal Master Seal
 Equal Leg Frame
 Commercial With
 Exterior Applied Grid Frame
 HS-C50 (6'0x 5'0)
 3 1/4" Frame Depth



Typical Vert.
 Sectional Details



| | | | | | | |
|---------|------------------|-----------|-----------|------|-------------|---|
| SHEET # | Drawn by: | Customer | Revisions | | | WINDOW TECH SYSTEMS 15 OLD STONEBREAK ROAD MALTA, NY 12020 800-999-9855 FAX: 518-899-4104 info@windowtechsystems.net |
| | Checked by: | | No. | Date | Description | |
| | Date: | Project : | | | | |
| | Scale: 1/2 Scale | | | | | |