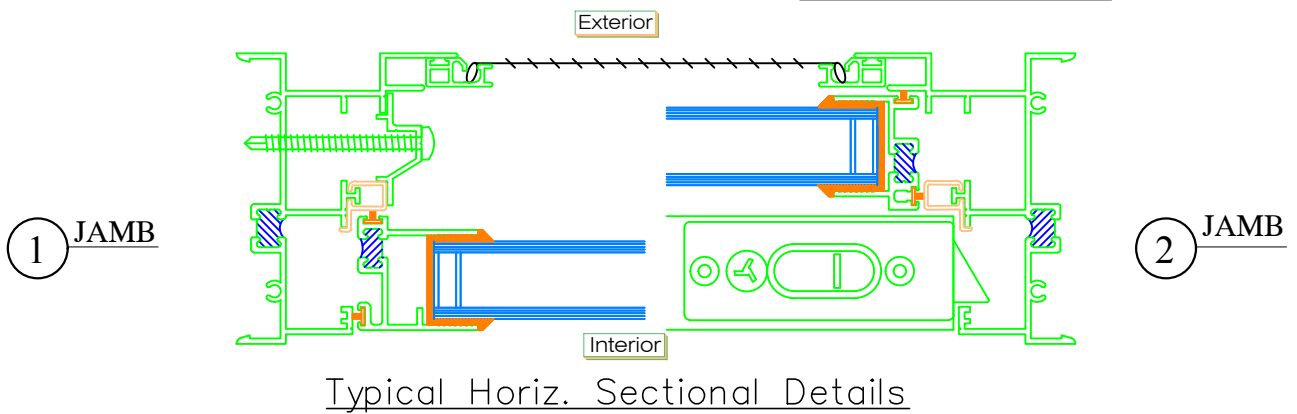
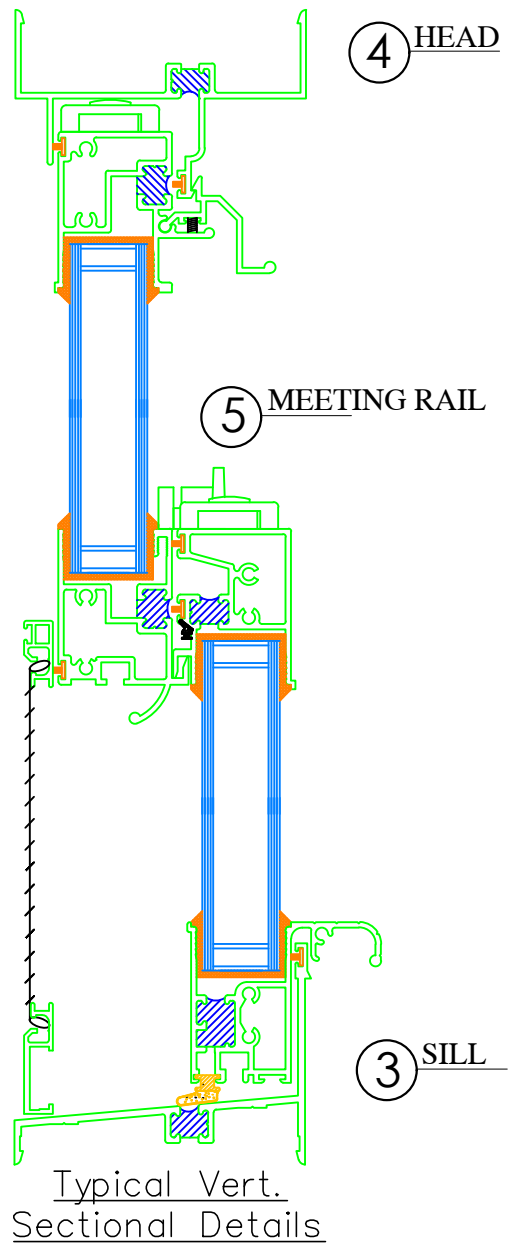


Series 7000C Double Hung  
 Aluminum Prime Window  
 Thermal Master Seal  
 Equal Leg Frame  
 Commercial  
 H-C50 (4'6" x 7'6")  
 H-C60 (4'0" x 6'0")  
 3 1/4" Frame Depth



|         |                  |           |           |      |             |   |
|---------|------------------|-----------|-----------|------|-------------|---|
| SHEET # | Drawn by:        | Customer  | Revisions |      |             | <b>WINDOW TECH SYSTEMS</b><br>15 OLD STONEBREAK ROAD<br>MALTA, NY 12020<br>800-999-9855 FAX: 518-899-4104<br>info@windowtechsystems.net |
|         | Checked by:      |           | No.       | Date | Description |   |
|         | Date:            | Project : |           |      |             |   |
|         | Scale: 1/2 Scale |           |           |      |             |   |