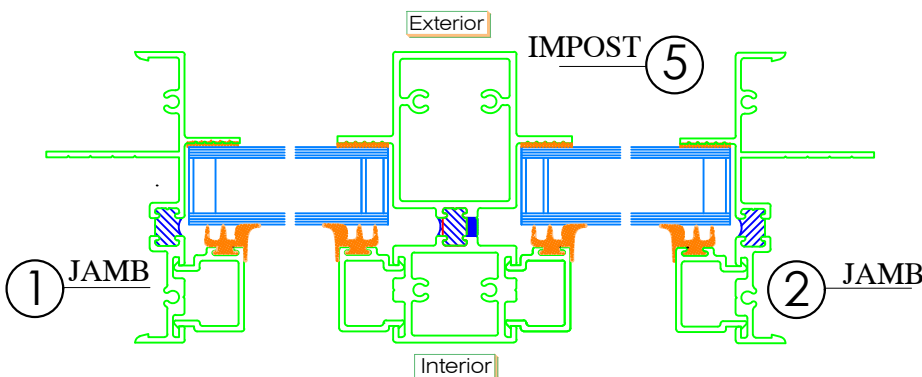
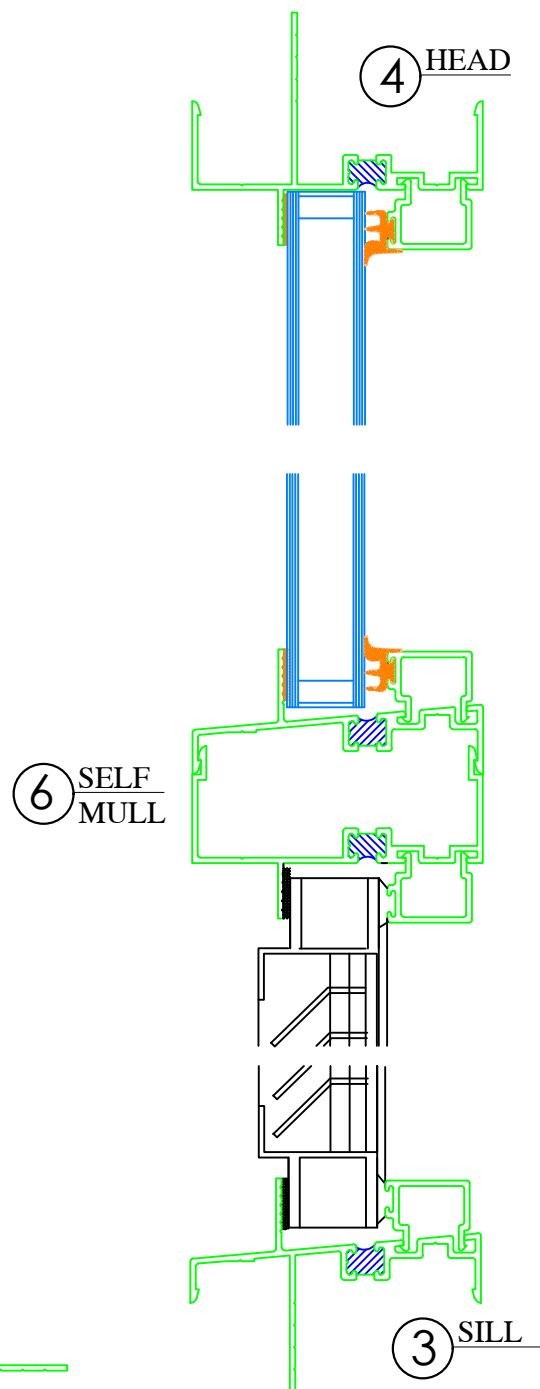


Series 7502C Fixed Lite
 Aluminum Prime Window
 Thermal Master Seal
 Equal Leg Frame
 with Vertical Impost
 Over Fixed with AEL42
 Louver
 Commercial
 F-C70 (6'0x 6'0)
 3 1/4" Frame Depth



Typical Vert. Sectional Details

Typical Horiz. Sectional Details

SHEET #	Drawn by:	Customer	Revisions		
	Checked by:		No.	Date	Description
	Date:	Project :			
	Scale: 1/2 Scale				

WINDOW TECH SYSTEMS
 15 OLD STONEBREAK ROAD
 MALTA, NY 12020
 800-999-9855 FAX: 518-899-4104
 info@windowtechsystems.net